

YOGA FOR MASS TIMBER: FLEXIBILITY & MOVEMENT

Making Mass Timber Buildings Even Better



Our Superpower: The Ability to Grow and Adapt

Global Integrated Flooring Solutions® are custom tailored to meet and adapt to your changing needs – combining industry-leading and field-proven raised access flooring with underfloor air distribution (UFAD), plug & play power systems, hidden WiFi and unique finishes that create an environment that is beautiful, highly adaptable and optimized for your client.

Global UFAD & MPD Systems are designed to be especially easy to manage. Our low-profile underfloor air design combined with our modular, plug & play electrical solution are essentially a MEP Lego® set. The components can be disassembled and reassembled into a new configuration easily and inexpensively. Changes to critical building infrastructure can be made quickly with very little disruption.

The Fully Integrated Solution

“IFS Building”



The Fully Integrated Solution

Floor & Finishes



Floor & Finishes



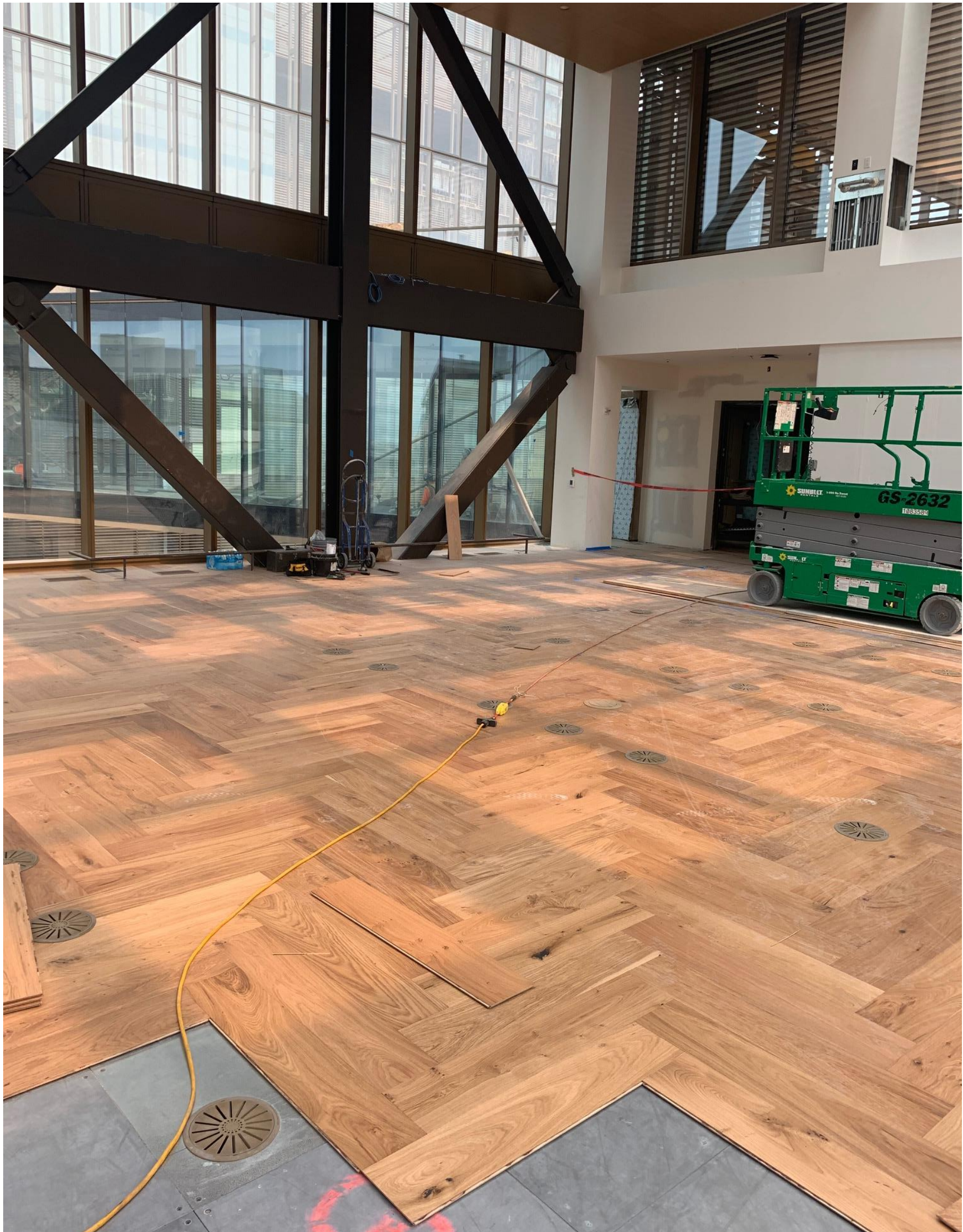
MAGNA-LOCK
FLOORING

Global IFS has a wide selection of floor finishes – both factory-applied or field-installed – that are modular and designed for fast and easy removal/reinstallation so that your space can change & adapt to new configurations. Make changes for a new tenant or new organizational challenges.

 **Global IFS®**
INTEGRATED FLOORING SOLUTIONS

The Fully Integrated Solution

Floor & Finishes



Floor & Finishes



MAGNA-LOCK
FLOORING

Magna-Lock wood plank finishes are available in a wide variety of sizes, species and finishes.

The Fully Integrated Solution

Floor & Finishes



Floor & Finishes



MAGNA-LOCK
FLOORING

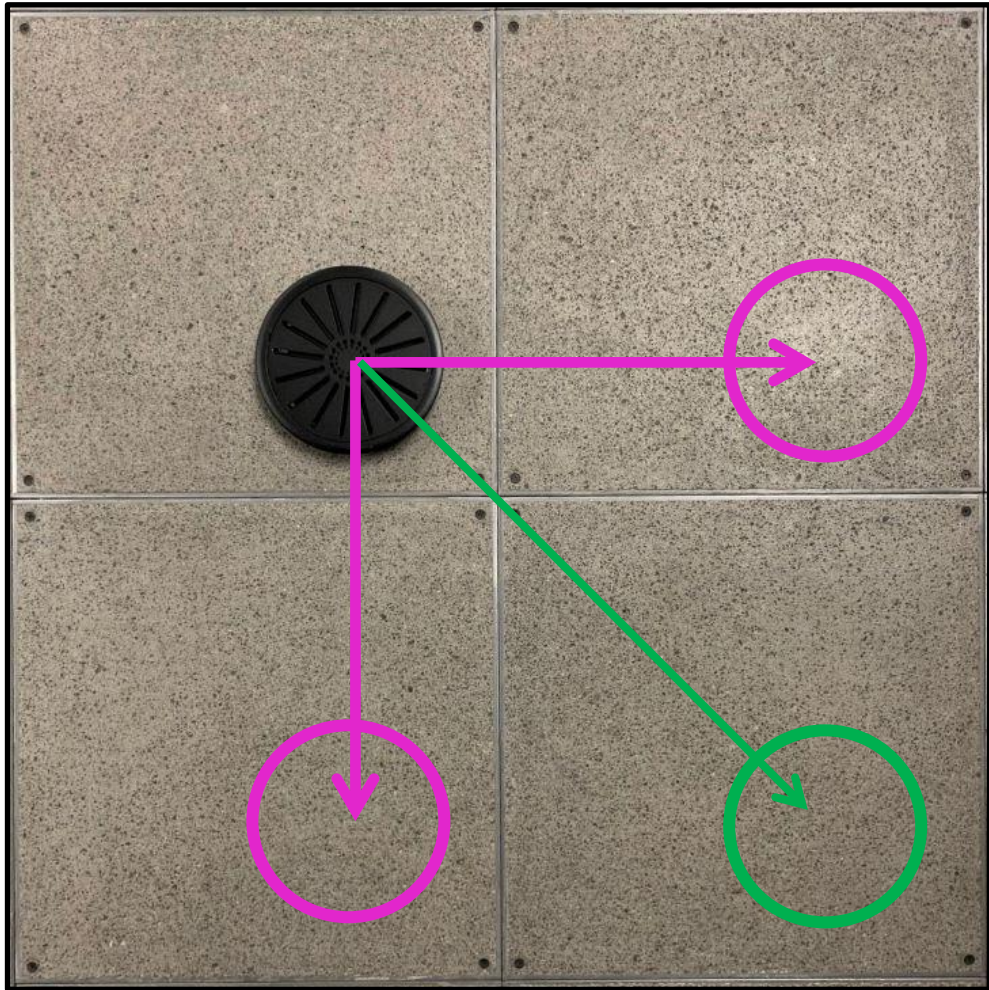
LVT tiles or planks and Trend Terrazzo tiles can be Magna-Locked so that you can customize your interior environment too.

The Fully Integrated Solution

Air Quality & Comfort

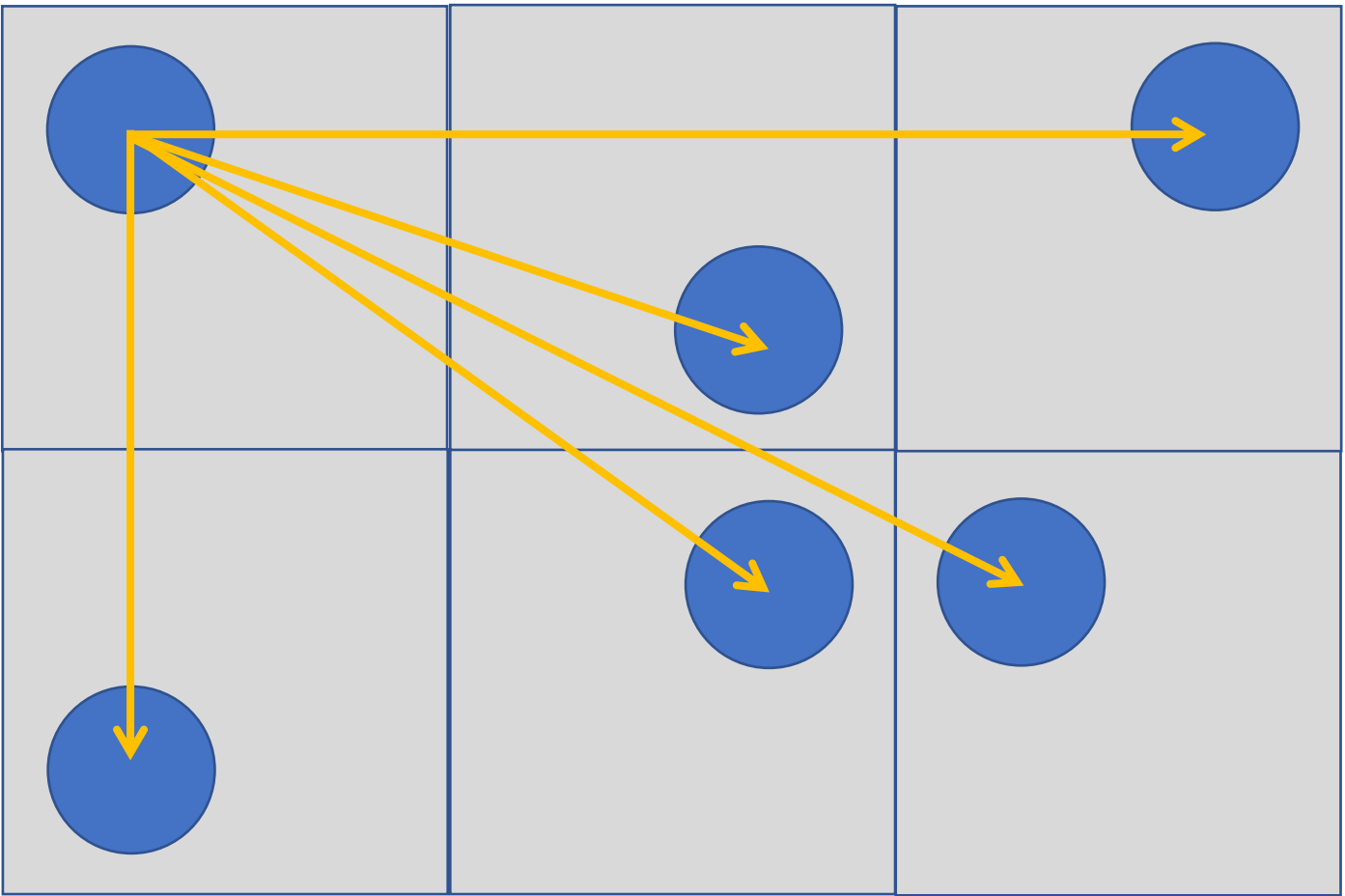


ALL YOU NEED TO KNOW:
Rotate the panel within its floor opening to move a diffuser or electrical box ~12"



ALL YOU NEED TO KNOW:
Swap the panel to the adjacent floor opening to move a diffuser or electrical box 24" or 33"

Moving a diffuser or floor box is crazy, easy!!
The Tool List: A Cordless Drill



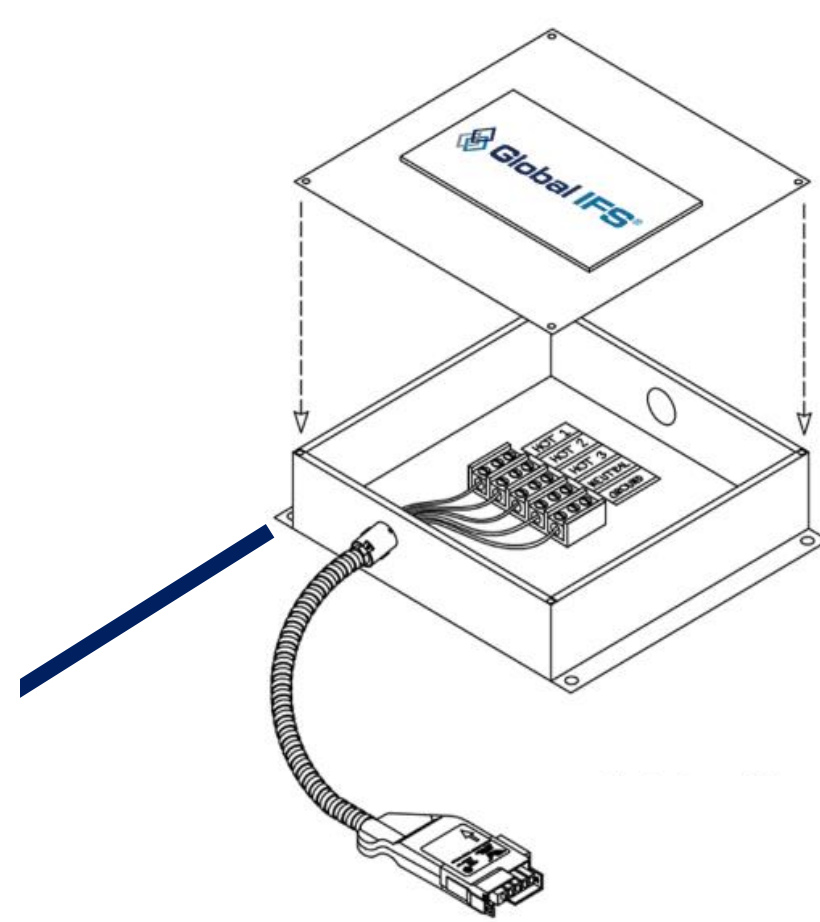
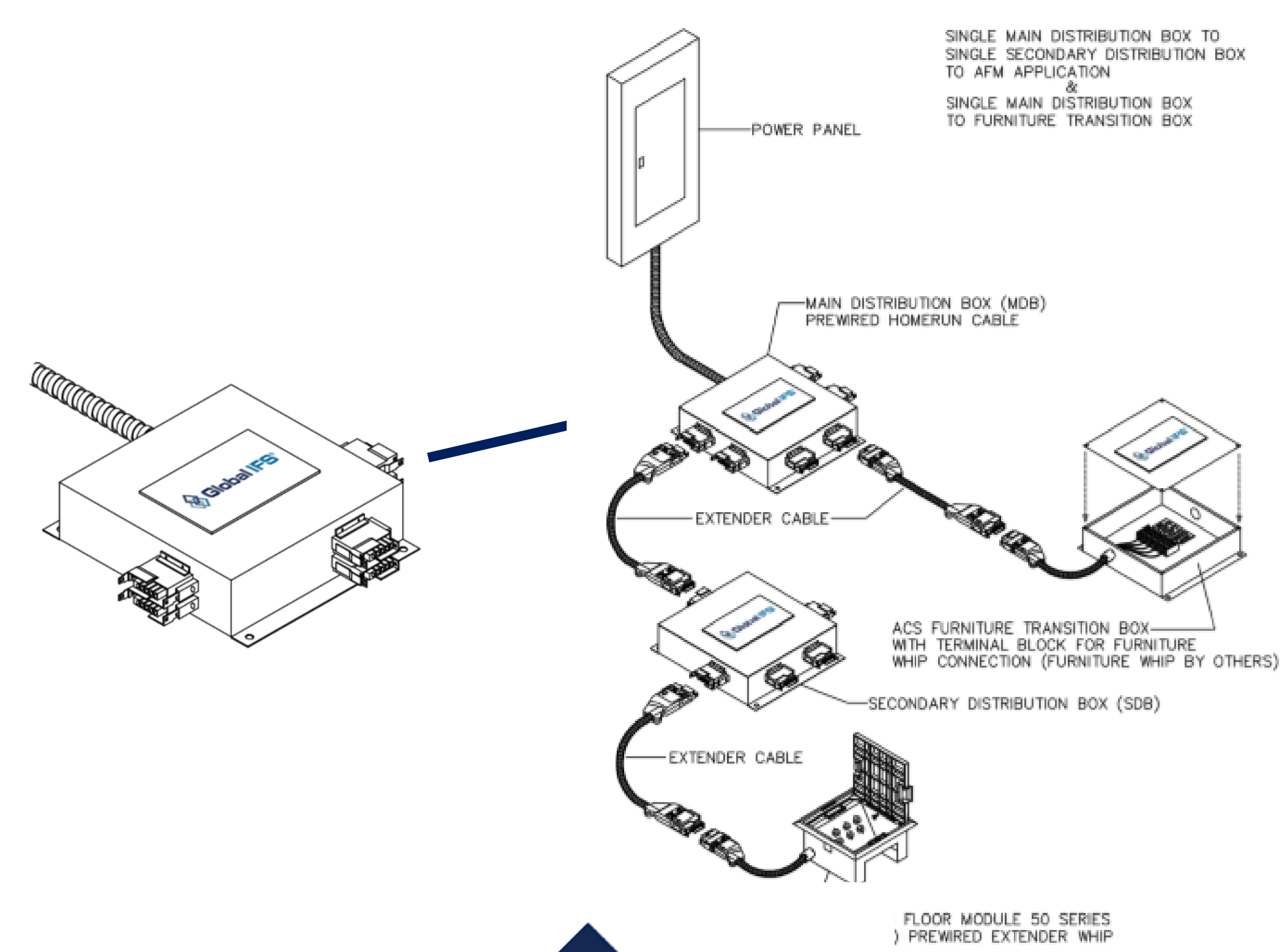
ALL YOU NEED TO KNOW:
Swap the panel in any locations to move a diffuser or electrical box wherever you need it!



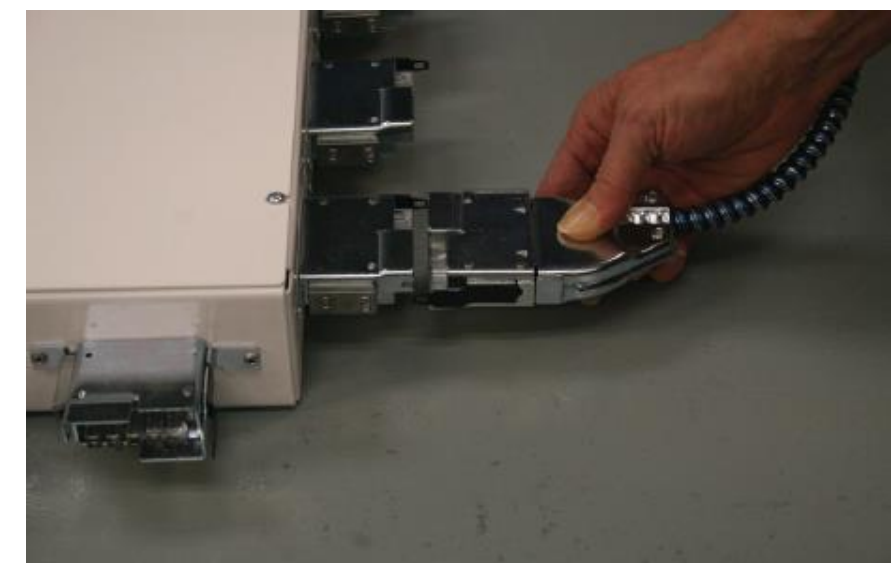
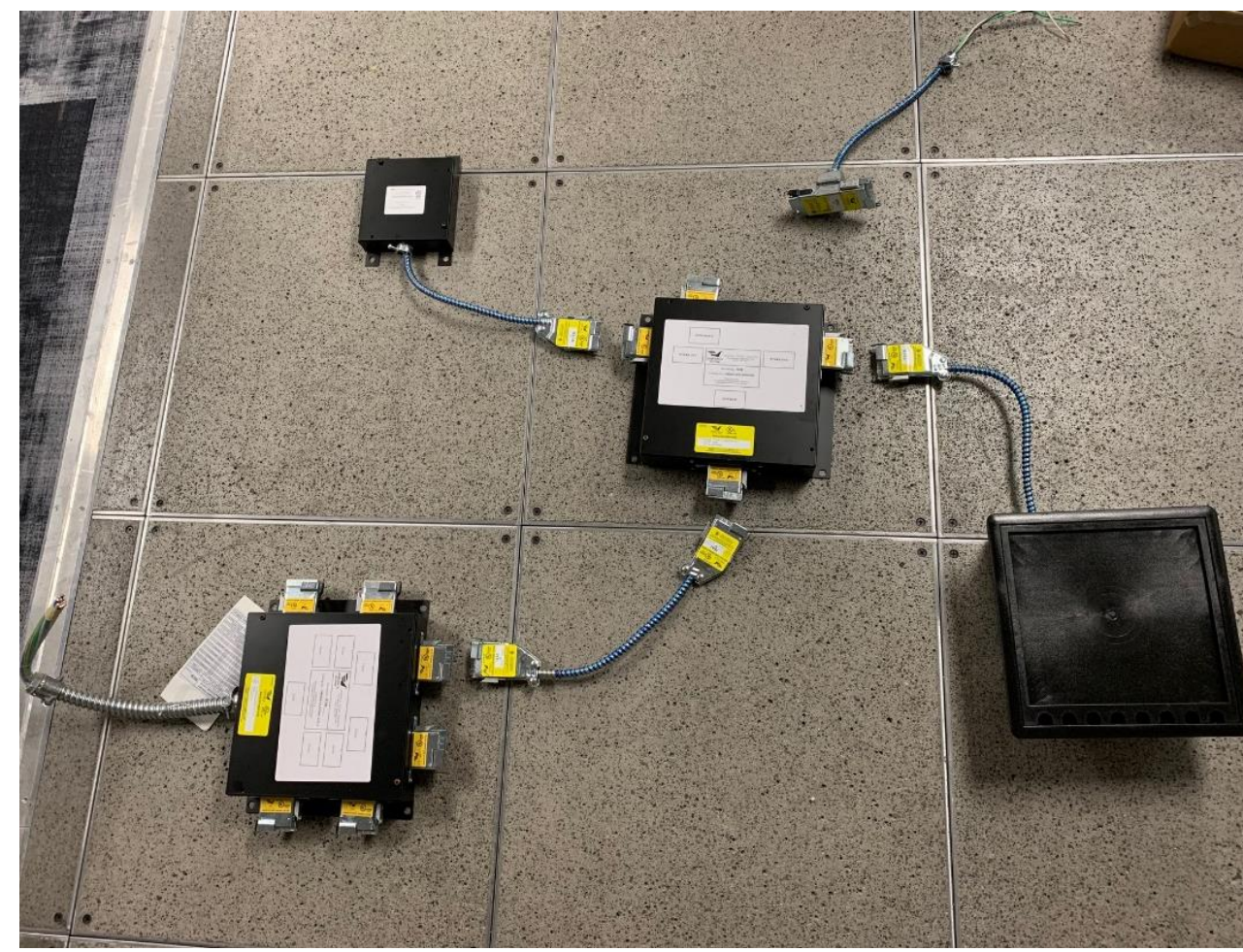
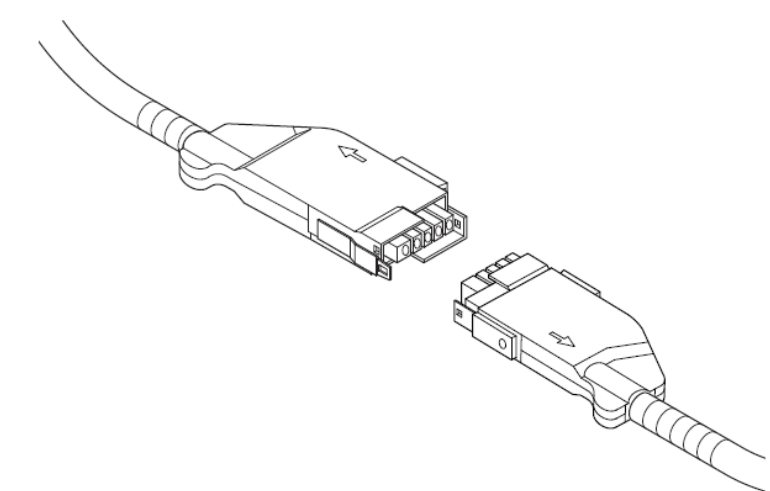
Air Quality
& Comfort

The Fully Integrated Solution

Power & Data Distribution



ALL YOU NEED TO KNOW:
Hidden WiFi!!



Power & Data
Distribution



ALL YOU NEED TO KNOW:
*Pre-engineered +
Pre-manufactured +
Plug & Play =
FAST INSTALLATION!!*

FLEXIBILITY & MOVEMENT

Click Here and See Us in Action!!!



<https://youtu.be/UQAFIL-PD2w>