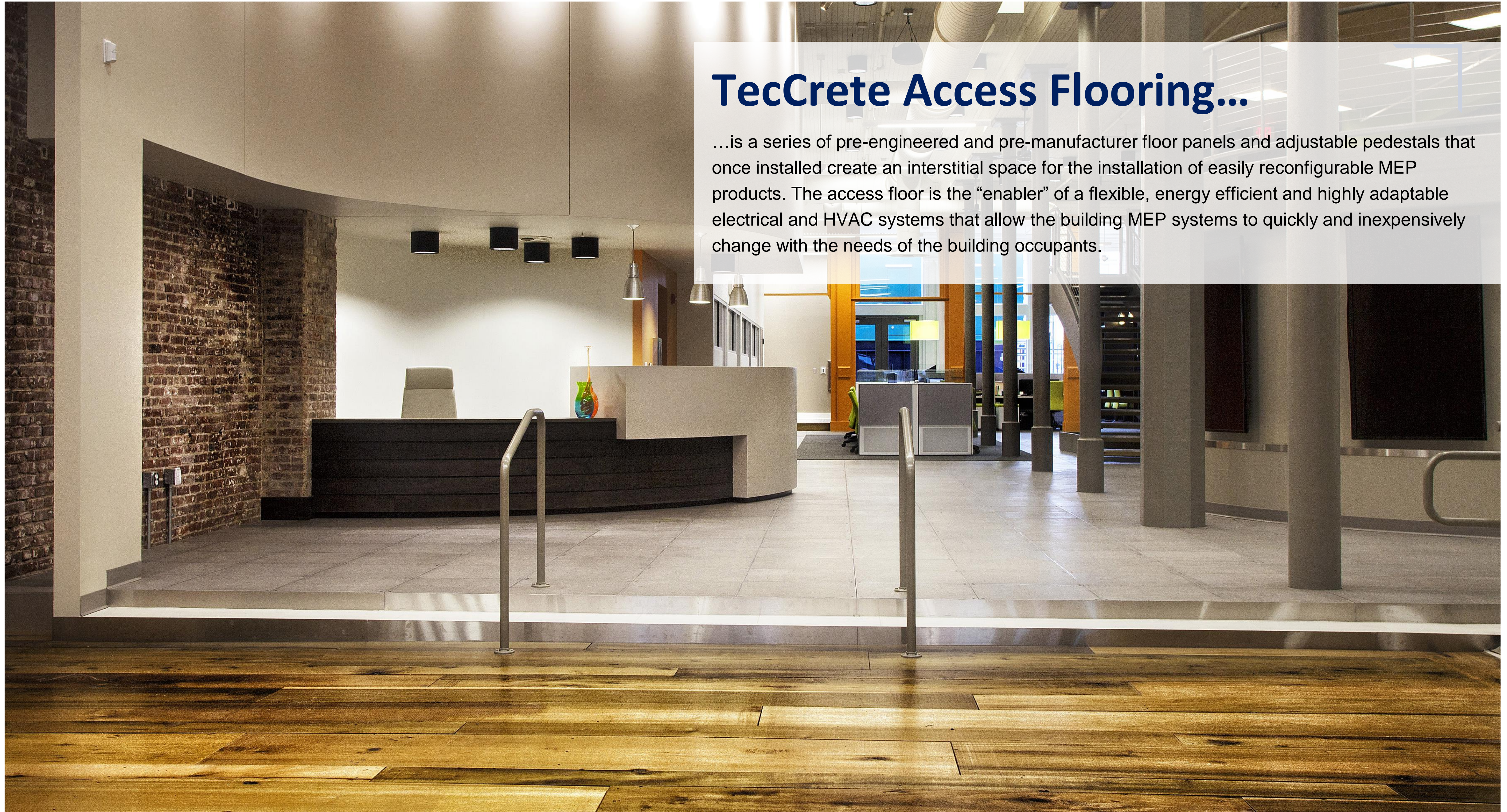


WHAT YOU NEED TO KNOW: ACCESS FLOORS 101

Making Mass Timber Buildings Even Better

TecCrete Access Flooring...

...is a series of pre-engineered and pre-manufactured floor panels and adjustable pedestals that once installed create an interstitial space for the installation of easily reconfigurable MEP products. The access floor is the “enabler” of a flexible, energy efficient and highly adaptable electrical and HVAC systems that allow the building MEP systems to quickly and inexpensively change with the needs of the building occupants.



The Fully Integrated Solution

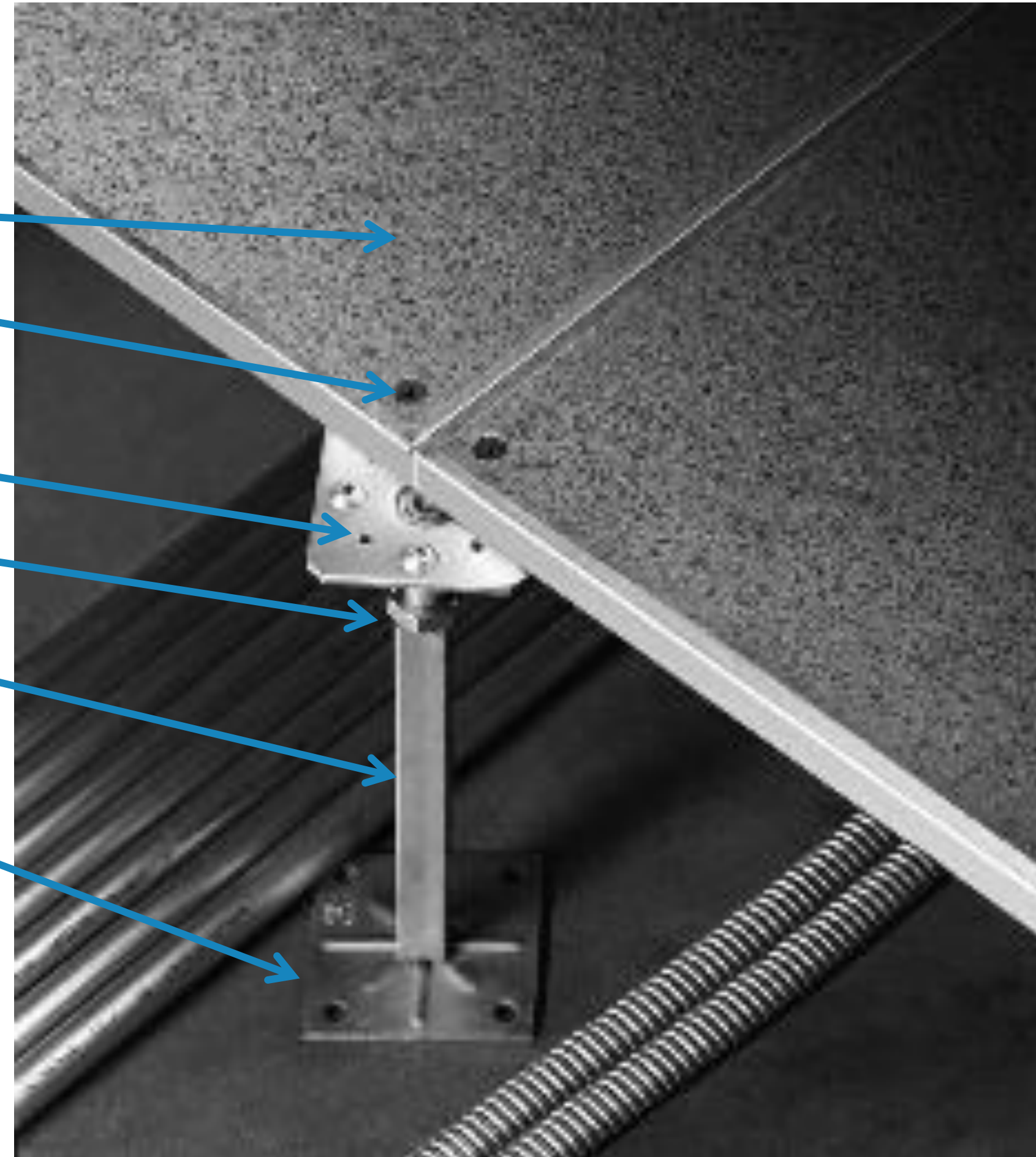
“IFS Building”



Access Floors 101

Simple Components

Panel
Cornerlock screw
Head
Leveling Nut
Pedestal base
Adhesive



WHAT YOU NEED TO KNOW:

System is available in 5 strengths

Floor heights between 3" and 64"

Seismically rated pedestals available

Final installation is flat & level

System has excellent acoustic performance

Hundreds of floor finishes available

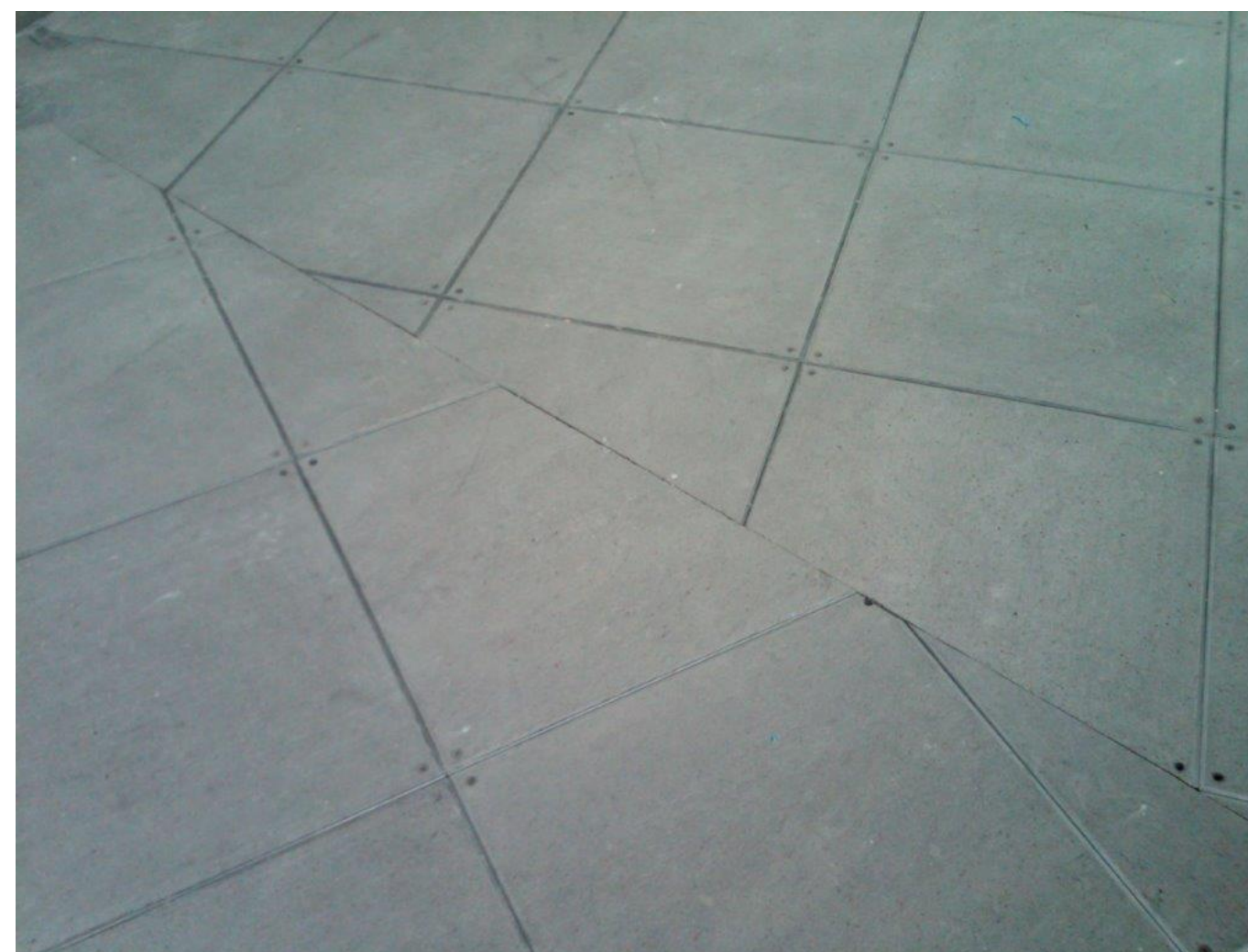
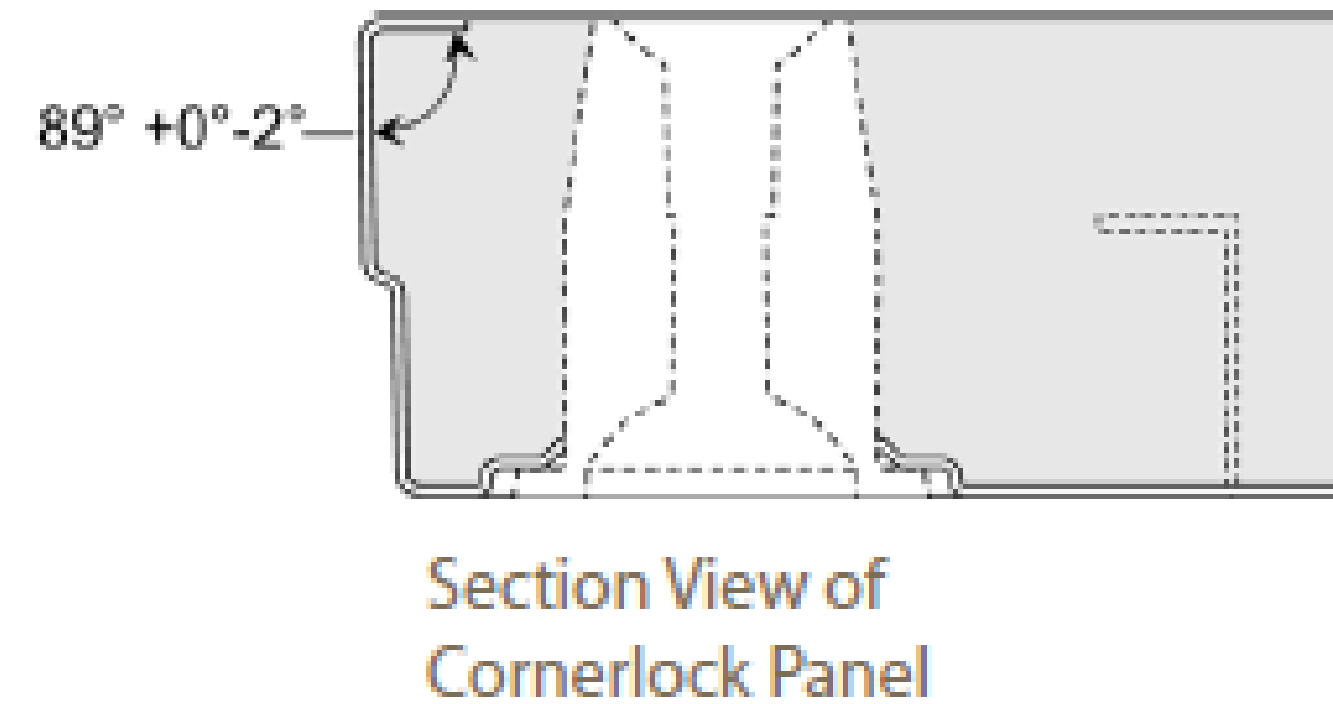
Compliant with IBC, ASTM & NFPA requirements

Made in the USA



Access Floors 101

Panel Construction



WHAT YOU NEED TO KNOW:

Panels are stiff, solid and quiet

Steel pan & concrete form rigid composite structure

Two panel thicknesses – 1-1/8" & 1-1/2"

Flat underside allows for full support during unusual installations

Completely non-combustible

60+% Recycled Content



Access Floors 101

How Strong Is TecCrete?

How we measure up per Industry Standard Testing:

Material Properties	TC 1250	TC 1500	TC 1500SL	TC 2000	TC 2500
Concentrated Load (min)	1250 psi	1500 psi	1500 psi	2000 psi	2500 psi
Uniform Load (min)	600 psf	700 psf	700 psf	800 psf	900 psf
Rolling Load (10/10,000 Pass)	1300 lbs /900 lbs	1500 lbs /1250 lbs	1500 lbs /1250 lbs	1750 lbs /2000 lbs	2000lbs /2000 lbs

Confused?? Don't feel bad. It's industry specific lab testing that's not easily compared to other building products/systems.

WHAT YOU NEED TO KNOW:

There is a TecCrete system that is more than adequate for your project. We've installed our systems in casinos, libraries, offices, manufacturing facilities, classrooms, and large corporate data centers. We've got you covered!!



Access Floors 101

How Strong Is TecCrete?

How we perform in the real world:



*What do you think?
Impressed?*

WHAT YOU NEED TO KNOW:

There is a TecCrete system that is more than adequate for your project. We've installed our systems in casinos, libraries, offices, manufacturing facilities, classrooms, and large corporate data centers. We've got you covered!!

Access Floors 101

How Do You Cope with Columns, Perimeters and Obstacles?

Beautifully!



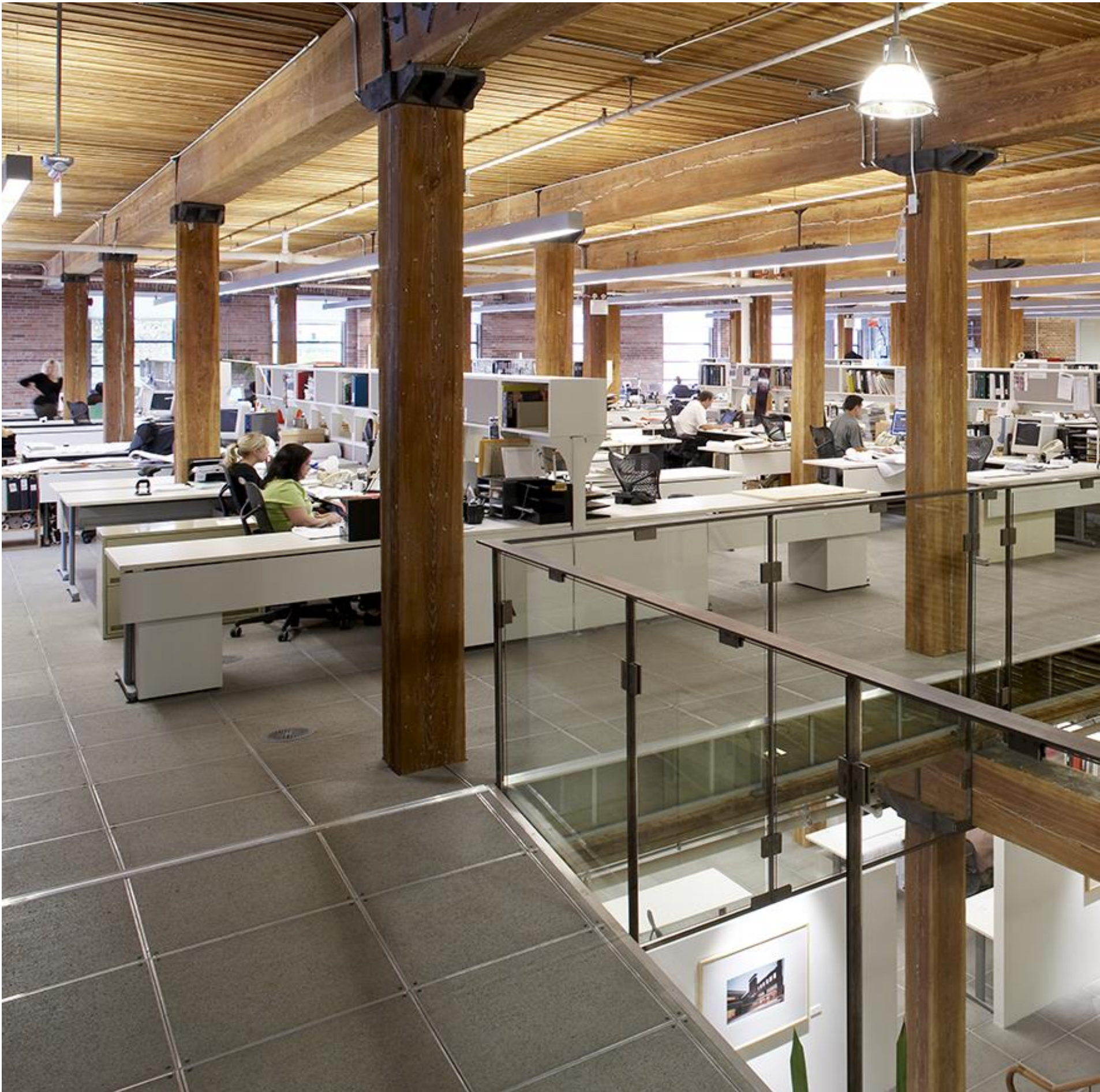
WHAT YOU NEED TO KNOW:

Panels are cut in the field around all obstacles be they columns, pipes, curtain wall, door jambs, elevation changes, or anything else.



Access Floors 101

Making Mass Timber Buildings Even Better



Floor & Finishes



WHAT YOU NEED TO KNOW:

Our floor panels can be the “final finish”. The concrete walking surface can be finished with a clear, Low-VOC sealer to compliment the wood interior.

WHO IS GLOBAL IFS?

Click Here and See Us in Action!!!



<https://www.youtube.com/watch?v=fg8o9LBD0sg>